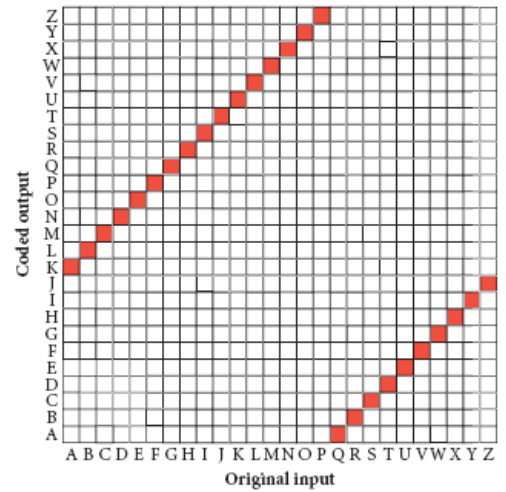


Quiz 7.3

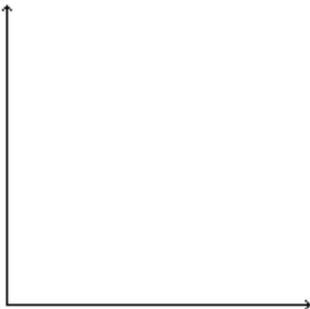
Use the letter-shift grid at right to

- 1) Find the output when the input is D
- 2) Find the input when the output is E
- 3) Code an F
- 4) Decode a G

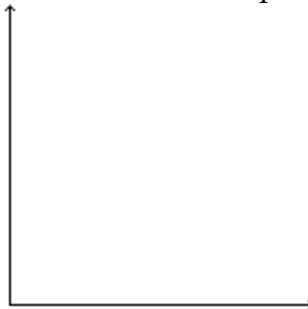


Sketch a function with the following properties:

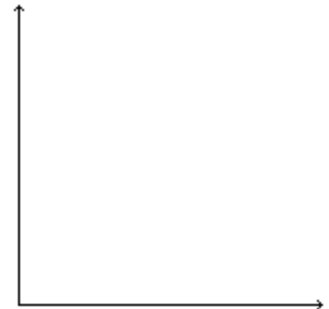
- 5) A linear, decreasing, discrete function



- 6) Continuous that begins increasing slowly, and then decreases rapidly.

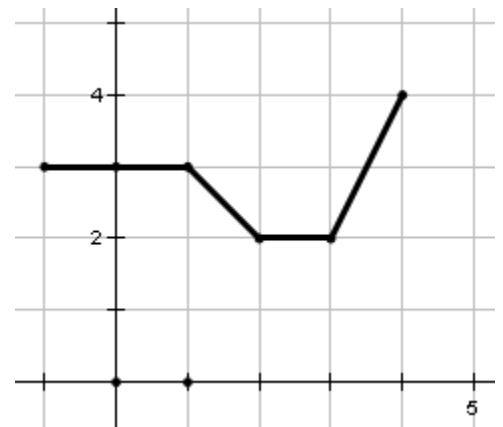


- 7) A nonlinear, continuous function increasing faster and faster



Using the graph at the right, answer the following:

- 8) What is the domain?
- 9) What is the range?
- 10) At what  $x$ -value does the maximum occur?
- 11) Is the relation that is graphed a function?



- 12) Name the dependent variable and the independent variable for the following:

*A company will spend money on advertisements in order to increase sales of their shirts*

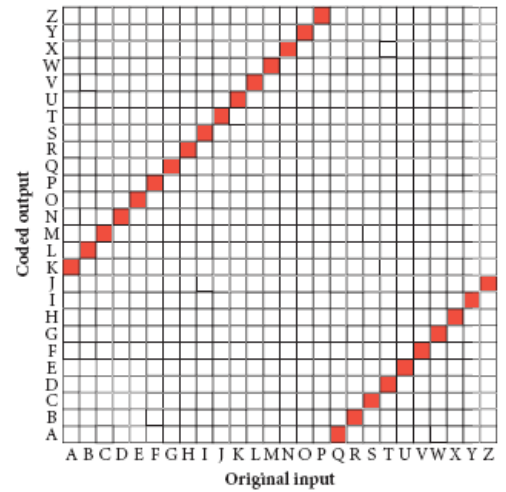
Dependent:

Independent:

Quiz 7.3

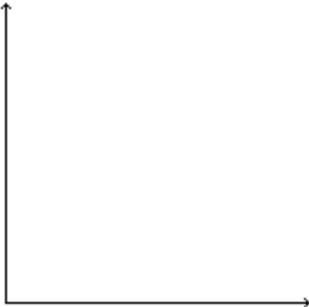
Use the letter-shift grid at right to

- 1) Find the output when the input is S
- 2) Find the input when the output is T
- 3) Code an U
- 4) Decode a V

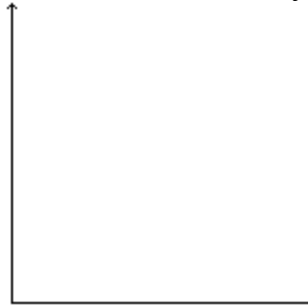


Sketch a function with the following properties:

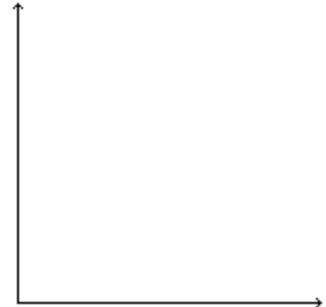
- 5) A nonlinear, decreasing, continuous function



- 6) Discrete graph that begins increasing linearly then decreases nonlinearly.

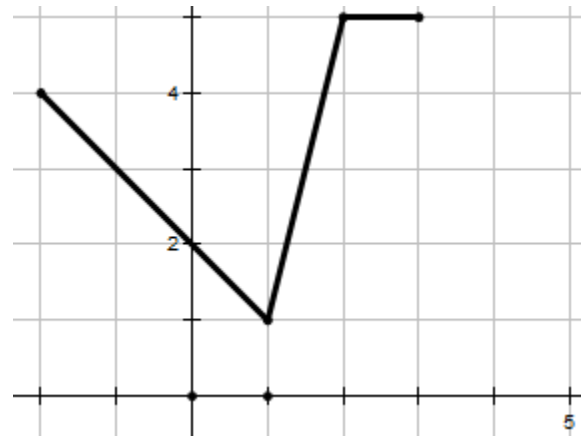


- 7) A nonlinear, continuous function decreasing faster and faster



Using the graph at the right, answer the following:

- 8) What is the domain?
- 9) What is the range?
- 10) At what  $x$ -value does the minimum occur?
- 11) Is the relation that is graphed a function?



- 12) Name the dependent variable and the independent variable for the following:

*The more you charge for t-shirts, the less you will sell.*

Dependent:

Independent: