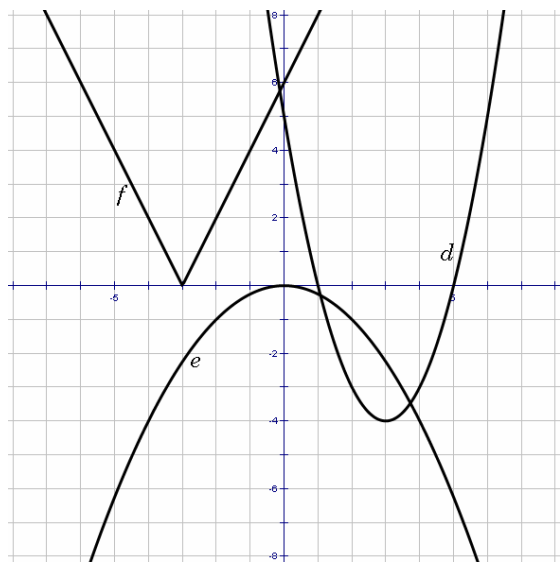
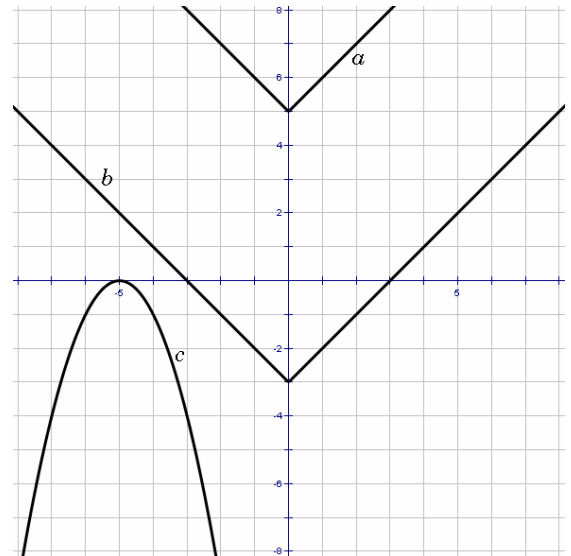


Chapter 8 Review

Write the equation that represents the functions graphed.

- a)
- b)
- c)



- d)
- e)
- f)

Fill in the blanks. Some spaces will be “none”.

	Function	Translation	Reflection	Stretched
Ex.	$y = -2(x + 3)^2$	left 3	over x -axis	vertical - factor of 2
g)	$y = -x + 3 $			
h)	$y = (x - 5)^2 - 9$			
i) $y = x^2$		up 8	over x -axis	none
j) $y = x $		down 1 and right 4	none	vertical - factor of 0.5

Describe what happens to the graph of $y = f(x)$ in these situations.

k) y is replaced with $\frac{y}{4}$

l) x is replaced with $x - 3$

m) y is replaced with $y + 2$

n) x is replaced with $-x$

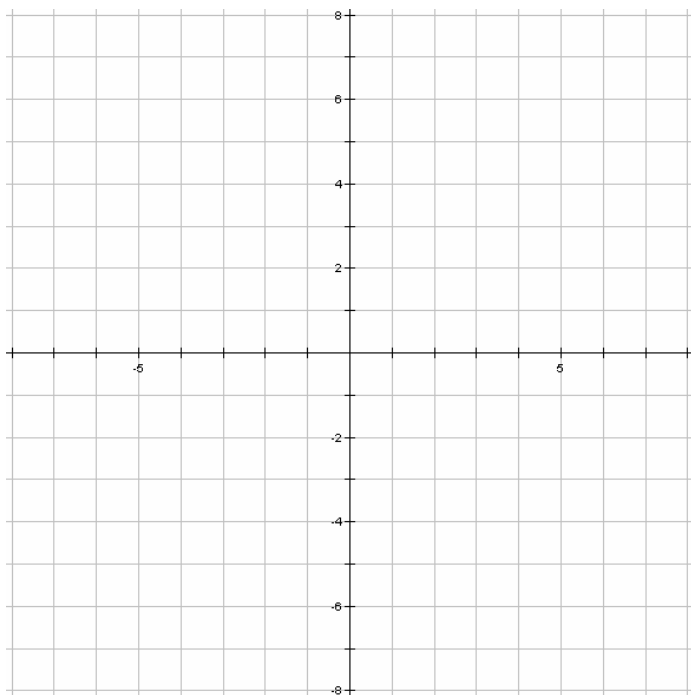
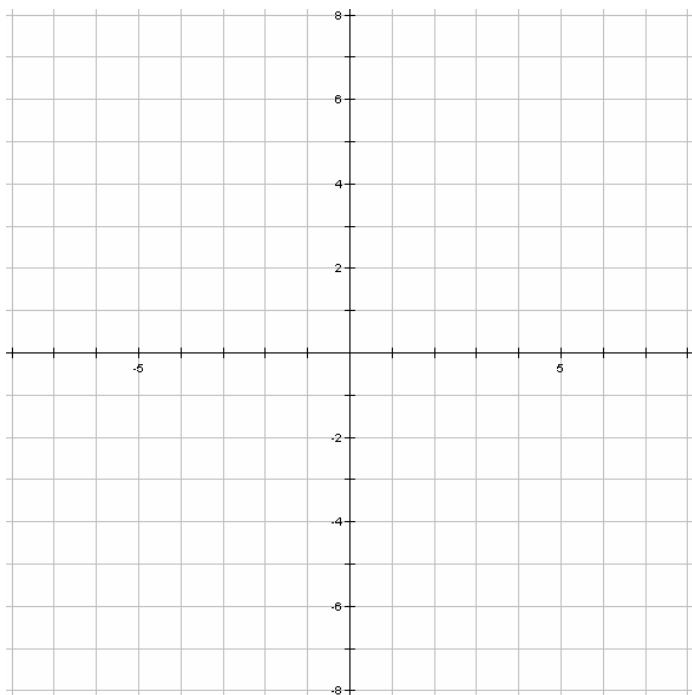
Graph the following functions on the graph paper

o) $y = -x^2 + 3$

p) $y = |x - 4| + 2$

q) $y = -3|x| + 7$

r) $y = (x + 5)^2$



$f(x)$ is plotted below. See if you can graph $f(-x)$ on the left and $-2f(x+5)+3$ on the right.

